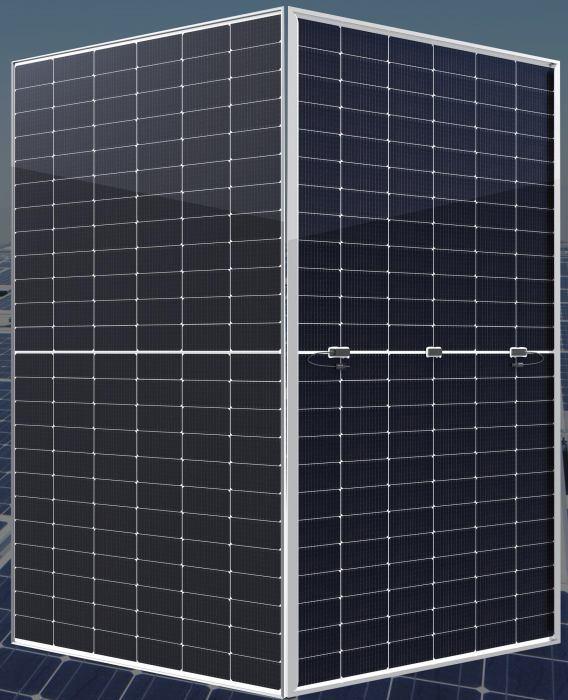


P-Type

182 Mono-Bifacial Module
GPMDG-560W (144)

540W-560W

Maximum output power	Maximum efficiency	Power tolerance
560W	21.68%	0~+3%



▶ Key Features



SMBB Technology

Better light trapping and current collection to improve module power output and reliability.



Better resistance to heat spots

By optimizing circuit design and working current, better temperature coefficient and heat spot resistance can be obtained.



PID Resistance

Excellent Anti-PID performance guarantee via optimized mass-production process and materials control.



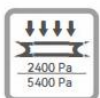
Durability Against Extreme Environmental Conditions

High salt mist and ammonia resistance.



Duplex power generation

The power gain on both sides increases with the light received on the back, up to 25%.



Enhanced Mechanical Load

Certified to withstand: wind load (2400 Pascal) and snow load (5400 Pascal).

▶ Quality System

IEC61215(2016), IEC61730(2016)

ISO9001:2015:Quality Management System

ISO14001:2015:Environment Management System

ISO45001:2018:Occupational Health and Safety Management Systems

▶ Product Certifications

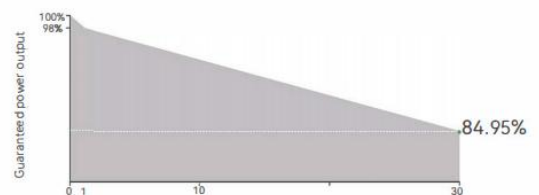


▶ Linear performance warranty

12 Year Product Warranty

30 Year Linear Warranty

0.4% Annual Degradation Over 30 Years



SUZHOU PRETA INTELLIGENCE AND TECHNOLOGY CO.,LTD

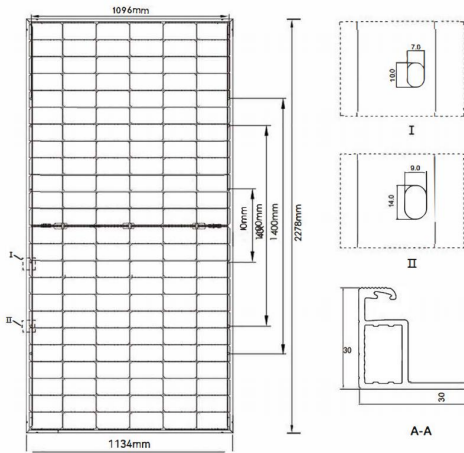
Add: No..55 Shangxiang Road, Huaqiao Corporation Head Quarter Centre, Kunshan City, Suzhou City

Tell: 0512-36684019

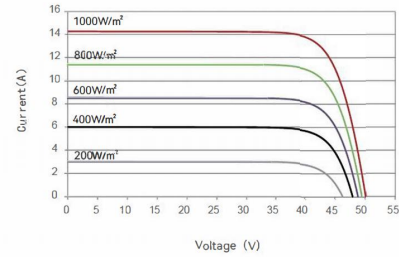
Web: <https://pretapower.com>

Mail: info@pretapower.com

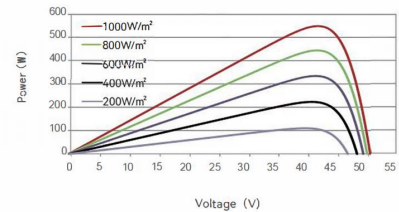
Engineering Drawings



Electical Performance (580W)



I-V curve



P-V curve

Electrical Parameters (STC*)

Maximum Power(W)	540	545	550	555	560
Maximum Power Voltage(V)	41.63	41.79	41.95	42.11	42.27
Maximum Power Current(A)	12.97	13.04	13.11	13.18	13.25
Open Circuit Voltage(V)	49.60	49.75	49.90	50.05	50.20
Short Circuit Current(A)	13.94	14.02	14.09	14.17	14.24
Module Efficiency(%)	20.90	21.10	21.29	21.48	21.68
Power tolerance	0~+3%				

* Irradiance 1000W/m², Module Temperature 25°C, Air Mass 1.5

Mechanical Parameters

Cell Type	182×91mm Perc
Number of Cells	144cells (2×72)
Dimensions	2278×1134×30mm
Weight	30KG
Front Glass	2.0mm, Anti-Reflection Coating
Back Glass	2.0mm, Heat Strengthened Glass
Frame	Silver, anodized aluminium alloy
J-Box	IP68 Rated,MC4 Compatible
Cable	4 mm ² ,300 mm standard

Electrical Parameters (NOCT*)

Maximum Power(W)	402.3	406.0	409.8	413.5	417.2
Maximum Power Voltage(V)	38.53	38.68	38.82	38.97	39.12
Maximum Power Current(A)	10.44	10.50	10.55	10.61	10.66
Open Circuit Voltage(V)	46.50	46.64	46.78	46.92	47.06
Short Circuit Current(A)	11.22	11.28	11.34	11.40	11.47

* Irradiance 800W/m², Ambient Temperature 20°C, Wind Speed 1m/s

Temperature Coefficient

Nominal Operating Cell Temperature (NOCT)	45±2°C
Temperature Coefficient of Isc	0.048%/°C
Temperature Coefficient of Voc	-0.28%/°C
Temperature Coefficient of Pmax	-0.35%/°C

Backside Power Gain (For550W)

Backside Power Gain(%)	10%	15%	20%	25%	30%
Maximum Power(Pmax/W)	605.0	632.5	660.0	687.5	715.0
Open Circuit Voltage(Voc/V)	49.84	49.84	49.94	49.94	49.94
Short Circuit Current(Isc/A)	15.38	16.08	16.78	17.48	18.17
Maximum Power Voltage(Vmp/V)	41.99	41.99	42.09	42.09	42.09
Maximum Power Current(Imp/A)	14.41	15.06	15.68	16.33	16.99

Application Parameters

Operational Temperature(°C)	-40°C~+85°C
Maximum System Voltage	1500V DC
Max Series Fuse Rating	25A
Wind/ Snow Load	2400Pa/5400Pa
Packaging Configuration	36PCS/PLT,720PCS/40HQ

SUZHOU PRETA INTELLIGENCE AND TECHNOLOGY CO.,LTD

Add: No..55 Shangxiang Road, Huaqiao Corporation Head Quarter Centre, Kunshan City, Suzhou City

Tell: 0512-36684019

Web: <https://pretapower.com>

Mail: info@pretapower.com