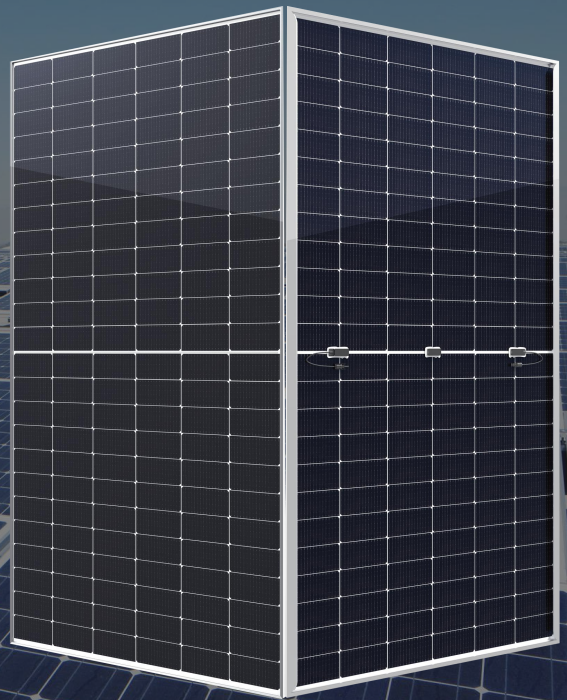


N-Type

210 HJT MBB Half-cut
Bifacial Module
GPG12H66-730HC

710W-730W



Maximum output power	Maximum efficiency	Power tolerance
730W	23.50%	0~+3%

▶ Key Features



N-Type HJT Technology for Lower LCOE

The lower temperature coefficient and better low irradiance performance of HJT technology can effectively reduce LCOE.



Hot 2.0 Technology

The N-type module with Hot 2.0 technology has better reliability and lower LID/LETID.



PID Resistance

Excellent Anti-PID performance guarantee via optimized mass-production process and materials control.



Duplex power generation

The power gain on both sides increases with the light received on the back, up to 25%.



Enhanced Mechanical Load

Certified to withstand: wind load (2400 Pascal) and snow load (5400 Pascal).

▶ Quality System

IEC61215(2016), IEC61730(2016)
ISO9001:2015:Quality Management System
ISO14001:2015:Environment Management System
ISO45001:2018:Occupational Health and Safety Management Systems

▶ Product Certifications

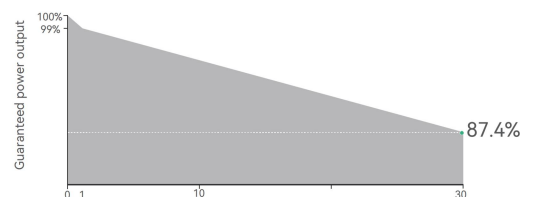


▶ Linear performance warranty

12 Year Product Warranty

30 Year Linear Warranty

0.4% Annual Degradation Over **30** Years



SUZHOU PRETA INTELLIGENCE AND TECHNOLOGY CO.,LTD

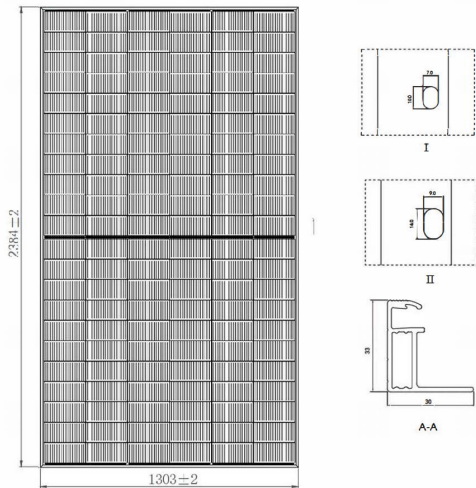
Add: No..55 Shangxiang Road, Huaqiao Corporation Head Quarter Centre, Kunshan City, Suzhou City

Tell: 0512-36684019

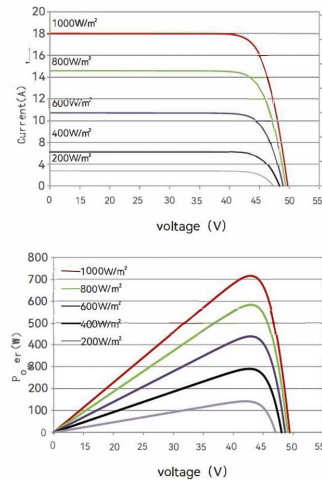
Web: <https://pretapower.com>

Mail: info@pretapower.com

Engineering Drawings



Electical Performance (580W)



I-V curve

P-V curve

Electrical Parameters (STC*)

Maximum Power(W)	710	715	720	725	730
Maximum Power Voltage(V)	41.93	42.00	42.07	42.14	42.21
Maximum Power Current(A)	16.95	17.05	17.15	17.25	17.35
Open Circuit Voltage(V)	50.01	50.09	50.17	50.25	50.33
Short Circuit Current(A)	18.00	18.10	18.20	18.30	18.40
Module Efficiency(%)	22.86	23.02	23.18	23.34	23.50
Power tolerance(%)	0 ~ +3				

*STOC (Standard Test Condition): Irradiance 1000W/m², Cell Temperature 25 C, Air Mass 1.5

Mechanical Parameters

Cell Type	HJT 210x105mm
Number of Cells	132cells(2x66)
Dimensions	2384x1303x33mm
Weight	38.3kg
Frame	Silver, anodized aluminium alloy
J-Box	IP68 Rated, MC4 Compatible
Cable	4 mm ² ,300 mm standard

Backside Power Gain (For 710W)

Backside Power Gain(%)	5%	10%	15%	20%	25%
Maximum Power(Pmax/W)	746	781	815	850	886
Open Circuit Voltage(Voc/V)	50.71	50.71	50.81	50.81	50.81
Short Circuit Current(Isc/A)	18.11	18.98	19.84	20.70	21.56
Maximum Power Voltage(Vmp/V)	43.46	43.46	43.36	43.36	43.36
Maximum Power Current(Imp/A)	17.16	17.97	18.79	19.61	20.43

Temperature Coefficient

Temperature Coefficient of Isc	-0.24%/°C
Temperature Coefficient of Voc	-0.22%/°C
Temperature Coefficient of Pmax	+0.047%/°C

Application Parameters

Operational Temperature(°C)	-40~+85°C
Maximum System Voltage	1500V DC
Max Series Fuse Rating	35A
Wind/ Snow Load	2400Pa/5400Pa
Packaging Configuration	33PCS/PLT,594PCS/40HQ

SUZHOU PRETA INTELLIGENCE AND TECHNOLOGY CO.,LTD

Add: No..55 Shangxiang Road, Huaqiao Corporation Head Quarter Centre, Kunshan City, Suzhou City

Tell: 0512-36684019

Web: <https://pretapower.com>

Mail: info@pretapower.com